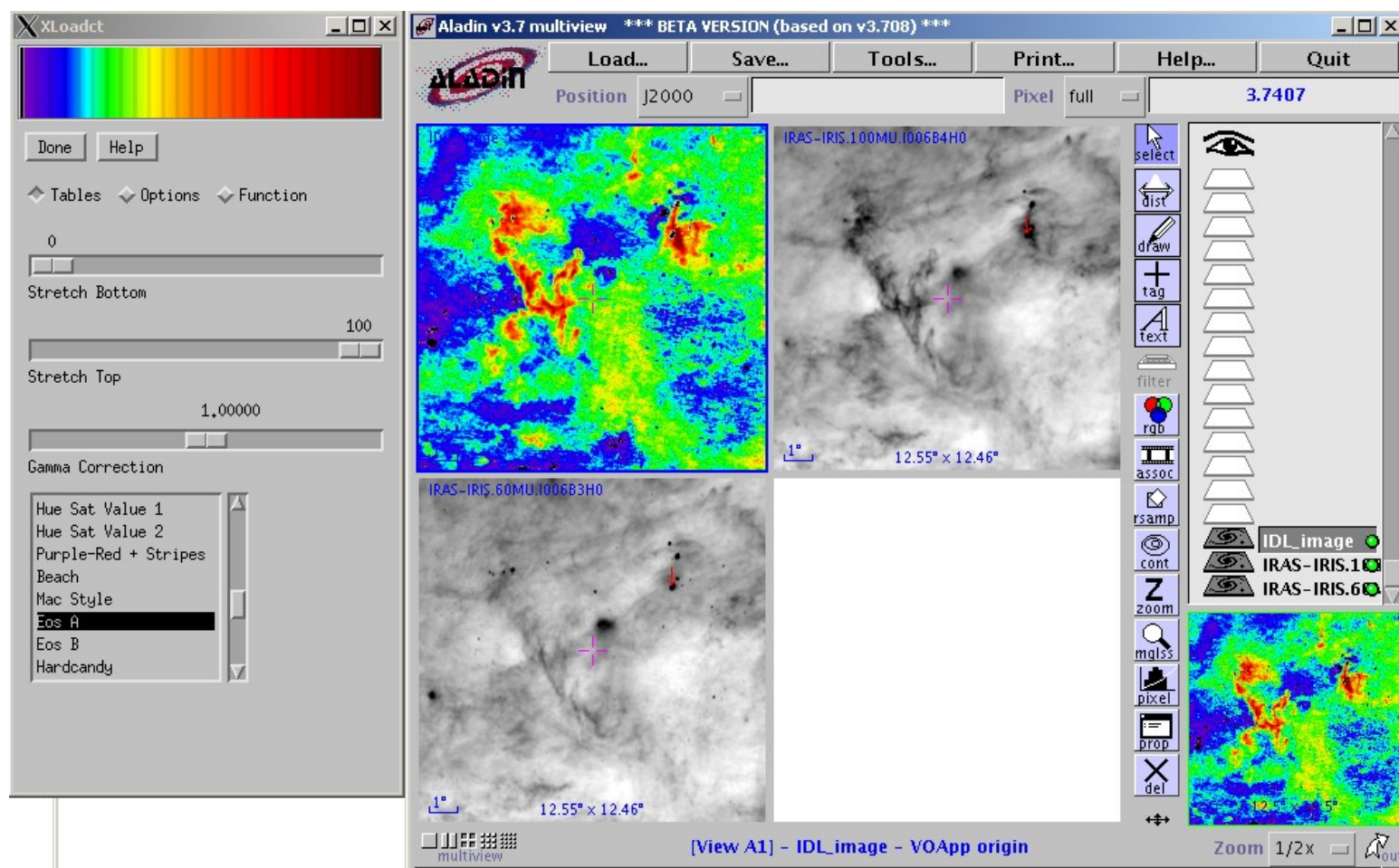


# Aladin/IDL interaction



Example of usage of the Aladin/IDL API :

- IRAS100 (top right) and IRAS60 (bottom left) images have been loaded in Aladin from the Aladin image server
- Both images have been retrieved in IDL variables
- A temperature map has been built from those 2 images in IDL, and the result has been sent to Aladin
- Finally, a new color map (coming from IDL) has been added and set in Aladin

Full API description,  
report on IDL Java Bridge  
available on VOTech Wiki :

<http://wiki.eurovotech.org/twiki/bin/view/VOTech/AladinIDL>